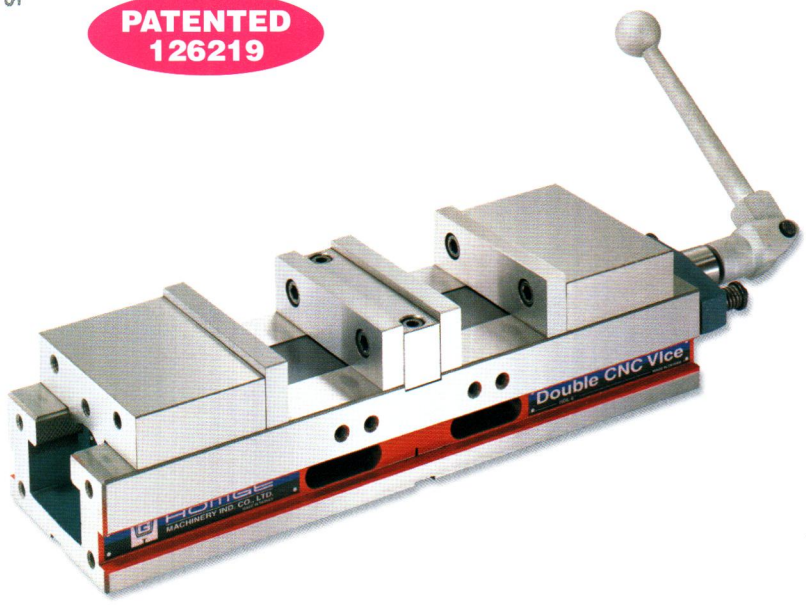


PATENTED
126219

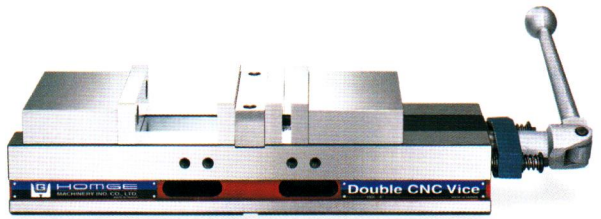


V-25~26

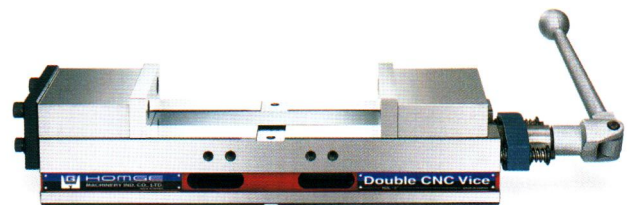
DOUBLE CNC PRECISION VICE

Model: HDL-4", 6"

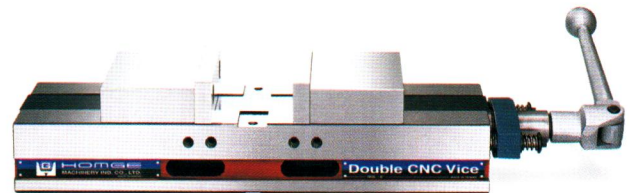
Increases the workholding capacity of CNC Machining Centers by holding 2 pieces in each vice. The design is also compact allowing several vices to be fitted to the work table.



The vice can hold 2 workpieces of different sizes. The maximum opening difference is 70mm.



Centre Jaw maybe removed to hold larger workpieces.



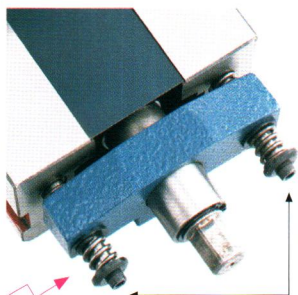
Once the centering Jaw is removed the vice is self centring.

STANDARD ACCESSORIES:

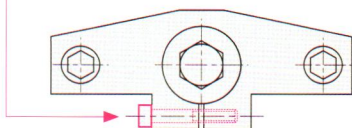
- 2 pcs of Alignment Wedge
- 4 pcs of Clamp

OPTIONAL ACCESSORY:

Soft Jaws (4 pcs / per set)

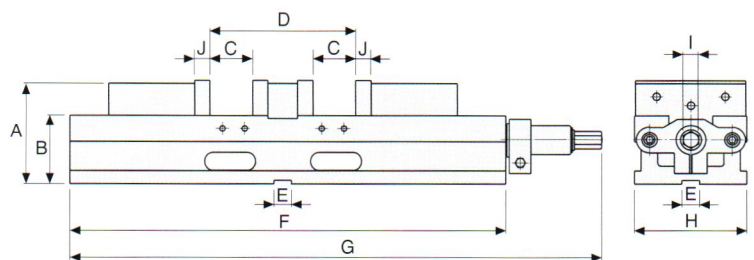


A special **SPRING DEVICE** allows an extra tolerance of up to 5mm in workpiece size enabling quick positioning and clamping.



If the tolerance of work-piece is more than 5mm, please adjust this screw.

DIMENSIONS



SPECIFICATIONS (Material: FCD 55 Ductile Iron. Hardness: HRC 50°)

Unit: mm

NO	Model	A	B	C	D	E	F	G	H	I	J	Weight (kg)
V-25	HDL-4"	92	63 ± 0.01	74	200	18	395	480	104	14	14	20
V-26	HDL-6"	118	80 ± 0.01	100	270	18	517	615	154	19	18	46