

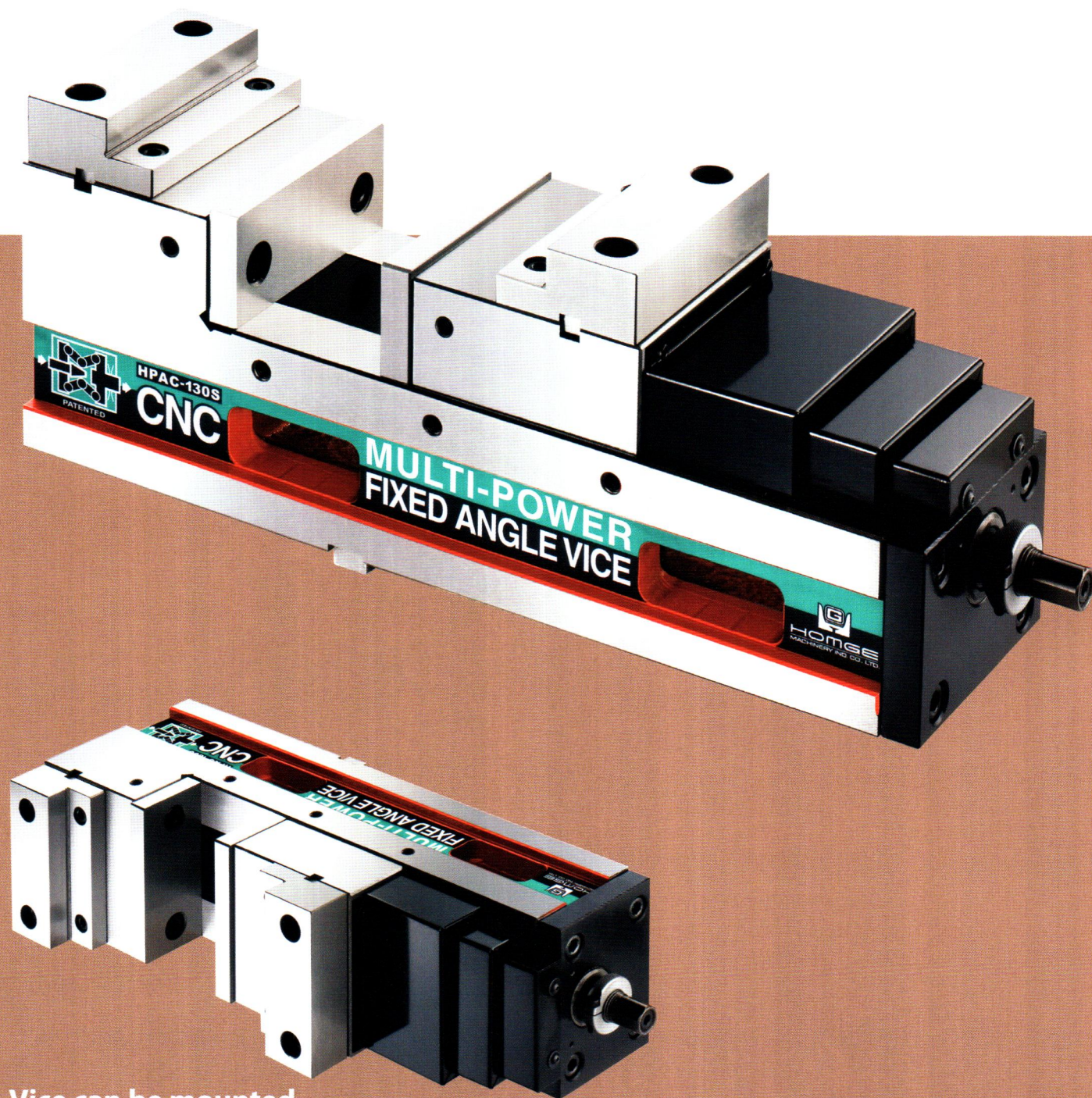
**PATENTED**  
**142711**  
**M287204**  
**M320459**

V-22A / 22 / 22B

## **MULTI-POWER CNC PRECISION FIXED ANGLE VICE**

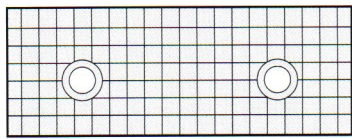
Model: HPAC-100S, 130S, 160S

- Shortest Length with Big Jaw Opening
- Extremely High Accuracy and Repeatability
- Special MULTI-POWER design enhances damping force of **0 ~ 6000KG**

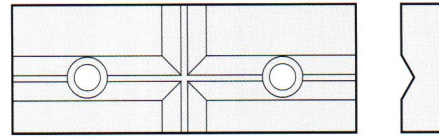


Vice can be mounted  
 horizontally or vertically.

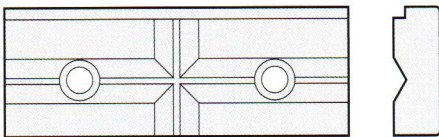
OPTIONAL ACCESSORIES:



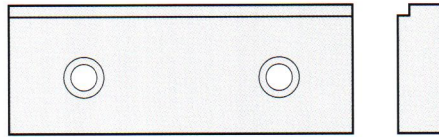
1) Cross Grooved Jaws



2) 'V' Jaws

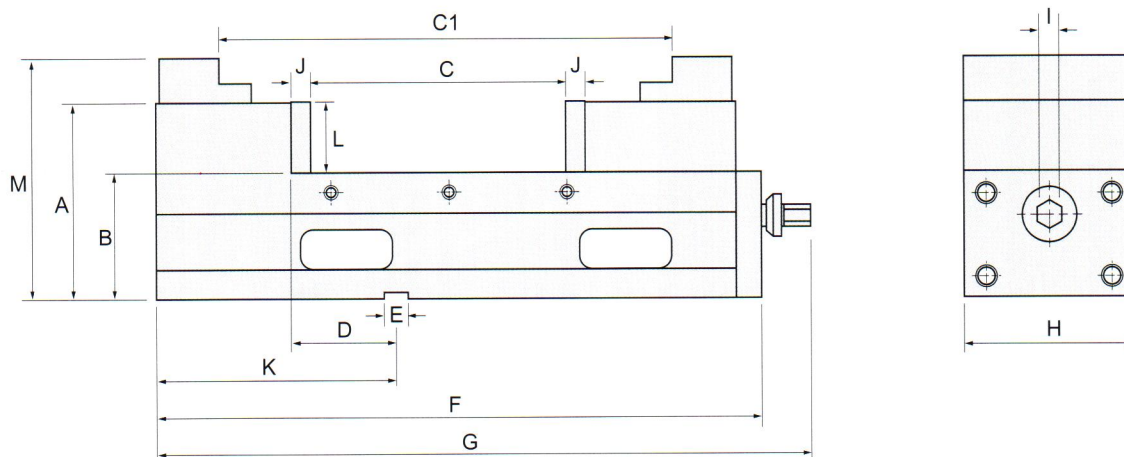


3) Combined Jaws



4) Step Jaws

DIMENSIONS



SPECIFICATIONS (Material: FCD 60 Ductile Iron. Hardness: HRC 50°)

Unit: mm

NO	Model	A	B	C	C1	D	E	F	G
V-22A	HPAC-100S	127	85 ± 0.01	0-170	115-280	75 ± 0.02	18	414	460
V-22	HPAC-130S	147	95 ± 0.01	0-190	155-340	75 ± 0.02	18	462	510
V-22B	HPAC-160S	160	105 ± 0.01	0-300	190-450	80 ± 0.02	18	532	580
NO	Model	Max. Clamping Force	H	I	J	K	L	M	Weight (kg)
V-22A	HPAC-100S	4000kg	100	19	15	178	44	153	32
V-22	HPAC-130S	5000kg	131	19	15	178	55	181	46.5
V-22B	HPAC-160S	6000kg	160	19	15	183	58	196	64