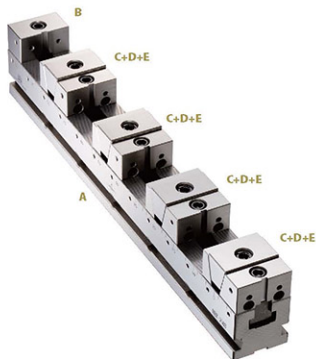
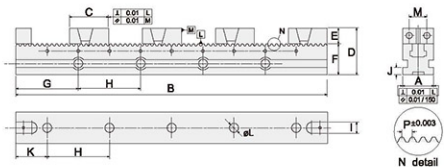


FD
FORCING DIRECTION
Model: HRV-50, 75, 100 (FD)

STANDARD ACCESSORIES:

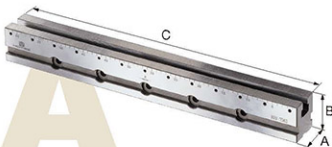
- 2 pcs of Alignment Wedge
- 4 pcs of Clamp
- 1 pc of Wrench

DIMENSIONS

SPECIFICATIONS (Material: Tool Steel. Hardness: HRC 56°-60°)

Unit:mm

Model	A	B	C	D	E	F	G	H	I	J	K	L	M	P	Weight (kg)
HRV-5030-FD		300					70				30				7
HRV-5040-FD		400					80				40				9
HRV-5050-FD	50	500	66	75	25	50 ±0.01	90	80/100	18	10	50	14	24	1.5	10
HRV-5060-FD		600					100				60				11
HRV-5070-FD		700					110				70				12
HRV-7543-FD		430					115				65				20
HRV-7553-FD	75	530	84	115	40	75 ±0.01	115	100	18	17	65	14	40	2	25.5
HRV-7563-FD		630					115				65				31
HRV-7573-FD		730					65				115				33.5
HRV-10055-FD		550					75				125				40
HRV-10065-FD	100	650	106	125	50	75 ±0.01	125	100	18	17	75	14	60	2.5	51
HRV-10075-FD		750					125				75				55

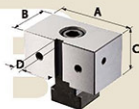
Forcing Direction Assembled Parts:



MAIN BODY

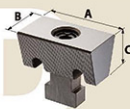
Unit: mm

Model	A	B	C
HRV-50A30	50	50	300
HRV-50A40	50	50	400
HRV-50A50	50	50	500
HRV-50A60	50	50	600
HRV-50A70	50	50	700
HRV-75A43	75	75	430
HRV-75A53	75	75	530
HRV-75A63	75	75	630
HRV-75A73	75	75	730
HRV-100A55	100	75	550
HRV-100A65	100	75	650
HRV-100A75	100	75	750



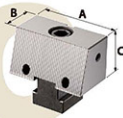
FIXED MOUTHPIECE SET

Model	A	B	C	D
HRV-50B	48	35	25	8
HRV-75B	73	42	40	8
HRV-100B	98	60	50	8



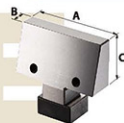
WEDGESET

Model	A	B	C
HRV-50D	48	26	21
HRV-75D	72	42	36
HRV-100D	98	50	45



SINGLE BEVEL FIXED MOUTHPIECE SET

Model	A	B	C
HRV-50C	48	27	25
HRV-75C	72	30	40
HRV-100C	98	35	50



SINGLE BEVEL MOVEABLE MOUTHPIECE SET

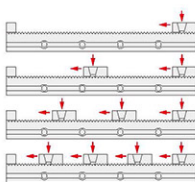
Model	A	B	C
HRV-50E	48	13	25
HRV-75E	73	12	40
HRV-100E	98	21	50

*** Note ***

HRV-5030-FD / HRV-7543-FD / HRV-10055-FD
Can clamp 3 workpieces only

FORCING DIRECTION

Maximum range of the working pieces to be clamped



Model				
HRV-5030-FD	199	66	22	—
HRV-5040-FD	299	116	55	25
HRV-5050-FD	399	166	89	50
HRV-5060-FD	499	216	122	75
HRV-5070-FD	599	266	155	100
HRV-7543-FD	304	110	45	—
HRV-7553-FD	404	160	78	36
HRV-7563-FD	504	210	112	60
HRV-7573-FD	604	260	145	88
HRV-10055-FD	384	139	57	—
HRV-10065-FD	484	189	91	41
HRV-10075-FD	584	239	124	66